

Talamex

S-LINE



Luxurious and comfortable sailing in a premium aluminum RIB



Talamex S-Line

Luxurious and comfortable sailing in a premium aluminum RIB

Luxurious and comfortable sailing in a premium aluminum RIB. That's where the S-Line stands for.

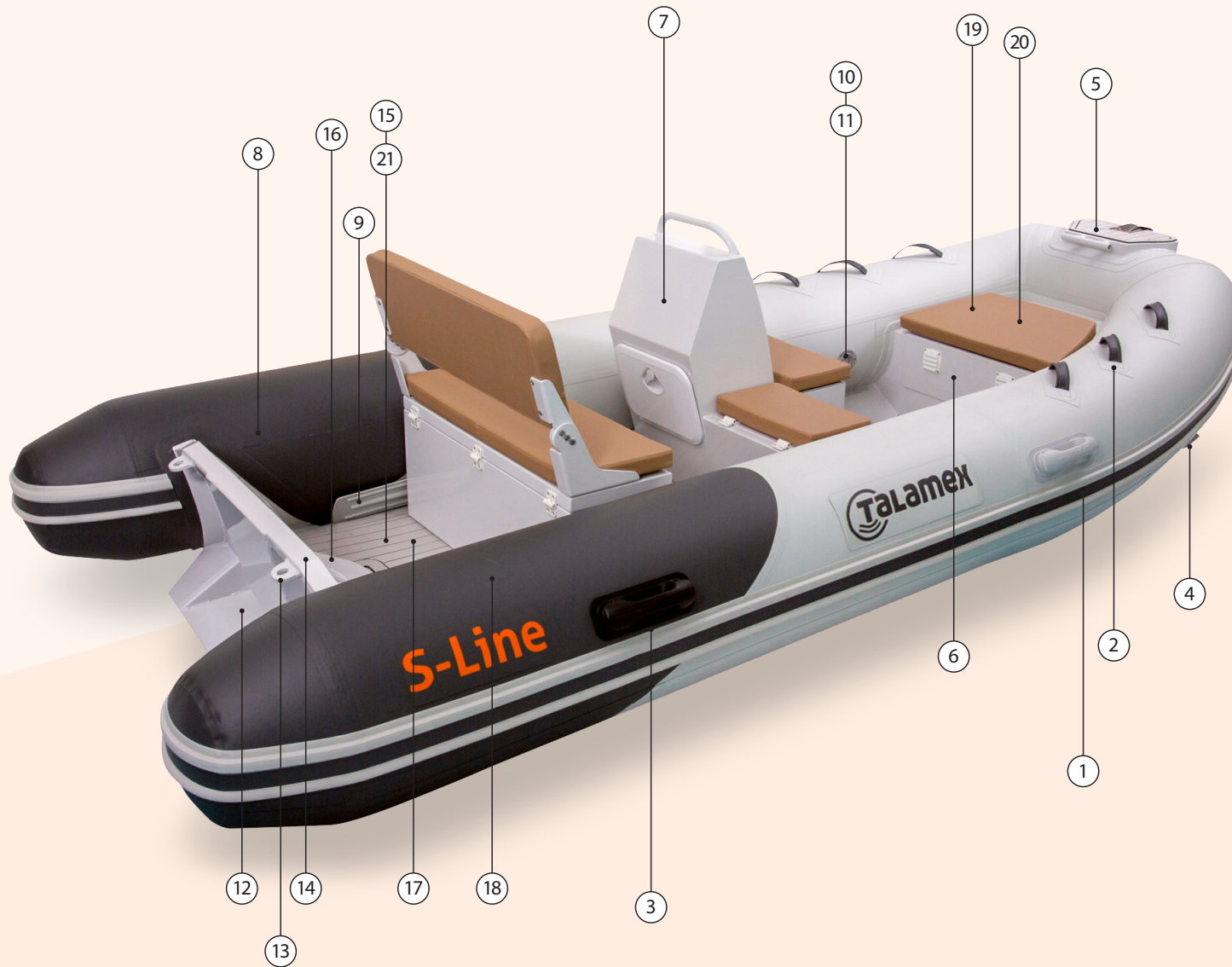
The Talamex S-Line is manufactured of 0,9mm German Valmex® Mehler PVC fabric, the best quality available. Also, the PVC is thermal welded which fuses the PVC together and extends the boat's lifetime significantly. This RIB is created with an extra wide, 3mm thick double-deck aluminium hull. The advantage of an aluminium hull in addition to the strength and stiffness of aluminium is also the low weight. This makes the

boat very manouvable, fast and manageable. The S-Line features a bowlocker with fueltank strap and has a double-deck hull with flat floor which is finished with high quality teak-look EVA foam for a premium look and feel. On the bow is equipped with a bow-step with anchor roll which simplifies boarding and anchoring. The special powdercoating ensures a high-quality appearance and makes the hull almost maintenance free. The S-Line is equipped with many unique features and the best European accessoires. The S-Line comes with two Bravo overpressure relief valves, aluminium paddles,

SS towing eyes and both hard and soft handles. Moreover, the six aluminium welded lifting eyes make the boat perfect for the davits. De S-Line is delivered including a special console and matching bow cushion. In the standard package of the boats is among other: a repair kit, double-action handpump, pressure gauge and fueltank strap. The boats have 3 year warranty and all Talamex boats are CE certified by EMCI, making them meet all European requirements!

Boat type	Length x Width (cm)	Max. load capacity (kg)	Max. engine in kW/HP	Recommended kW/HP	Max. engine weight (kg)	Max. passengers	Number of air chambers	Diameter tubes (cm)	Weight incl. paddles (kg)	Transom height
85.908.380 S-Line 380	380 x 185	690	22,1/30	22,1/30	90	6	4	46	143	Long

Fully equipped



- ① Luxurious rubbing strake
- ② Soft stitched handles for comfortable grip
- ③ Bravo hard handles
- ④ SS towing D-rings
- ⑤ Bow step with anchor roll
- ⑥ Bowlocker suitable for 24L fueltank
- ⑦ 3-person console with cushions
- ⑧ Thermically welded seams
- ⑨ Bravo telescopic paddles
- ⑩ Bravo one-touch airvalves with inflation sequence markers
- ⑪ Bravo overpressure relief valves
- ⑫ Drain plug
- ⑬ Welded aluminium lifting eyes
- ⑭ High transom
- ⑮ Teak-look EVA foam floor
- ⑯ Inspection hatch with space for bilge pump
- ⑰ 3mm double-deck aluminium hull with flat floor
- ⑱ 0,9mm German Valmex® Mehler PVC fabric
- ⑲ Fueltank strap for securing of fueltank
- ⑳ Bowcushion
- ㉑ Space between floors for fuel line



**Thermally welded Valmex®
Mehler PVC**

0,9mm Valmex® Mehler PVC, the best quality available with thermally welded seams for an extended lifetime.



Bowlocker

Bowlocker suitable for 24L fueltank and strap for securing the tank. Bowcushion is included.



Bow step with anchor roll

Bow step with anchor roll for easy anchoring and boarding.



Telescopic paddles

High quality Bravo telescopic paddles.



Aluminium hull with lifting eyes

3mm thick double-deck hull with several welded lifting eyes.



Teak-look foam floor

The teak-look EVA foam floor provides a premium look and feel.



Console with cushions

3-person aluminium console is amongst the package with premium cushions included (excluding steering wheel, system and remote control).

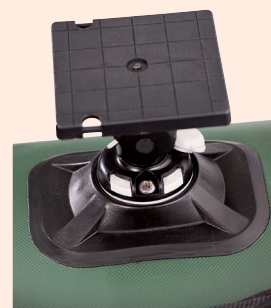
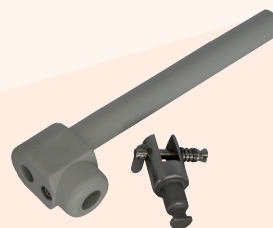


Bravo overpressure relief valves

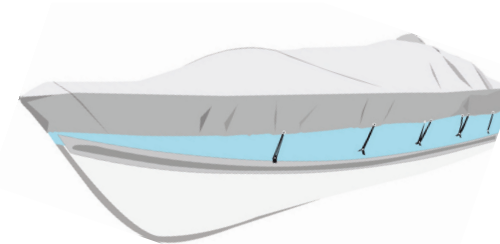
Your boat is protected against damage from excess pressure thanks to two smart Bravo pressure relief valves.

Accessories

Article number	Description
85.922.108	Seatbag with cushion grey - 120x20cm
85.922.109	Seatbag with cushion grey - 105x20cm
85.922.110	Seatbag with cushion grey - 100x20cm
85.922.111	Seatbag with cushion grey - 90x20cm
85.922.112	Seatbag with cushion grey - 85x20cm
85.922.113	Seatbag with cushion grey - 80x20cm
94.100.020	Drybag 5L
94.100.021	Drybag 10L
94.100.022	Drybag 15L
85.922.123	Pressure gauge for handpump
85.922.040	Handpump standard valve Talamex
85.922.214	Anchor line holder for inflatable boat
20.300.165	Bravo BST 800 electric airpump
20.300.176	Bravo BST 800 Battery electric airpump
20.300.160	Bravo GE 230/1000 electric airpump
95.900.337	Oarlock replacement kit for bimini Aqualine, Greenline, Superlight
95.900.338	Oarlock replacement kit for bimini Comfortline, Highline, Silverline
95.900.339	Stainless steel bimini holder for oarlocker
85.922.236	Glue-on accessory base/mount (pair)
85.922.237	Adjustable plug-in holder for fishing rod
85.922.238	Adjustable plug-in platform for fishfinder/chartplotter



Accessories



Article number	Description
77.203.001	Folding anchor 1,5kg
77.203.002	Folding anchor 2,5kg
77.203.003	Folding anchor 3,2kg
77.203.004	Folding anchor 4kg
77.203.006	Folding anchor 6kg
79.625.102	Boarding ladder for inflatables aluminium 2 steps
79.625.103	Boarding ladder for inflatables aluminium 3 steps
85.540.174	Transportrader Spiegelmontage
81.101.829	Boatcover Maxi Tender (300-360cm)
81.101.830	Boatcover Tender (240-300cm)
81.101.831	Boatcover XXS (420-480cm). (Boatwidth max. 180cm)
81.101.832	Boatcover XS (420-480cm). (Boatwidth max 229cm)
85.930.200	Aluminium pole for boat covers 60-100cm
85.000.424	Valet kit
85.000.430	Insta-Lock lock and lift system



Talamex lifejackets

Specially selected for you

Talamex Inflatable lifejacket 150N:

- Automatically & Manual
- For persons of 40 kg and more
- According ISO 12402-3

Talamex 100N Kids lifejackets:

- Fabric 100% polyester, High visible EN ISO 20471
- Foam from light PE
- Reflective panels
- Crotchstrap for extra safety
- Adjustable waistbelt with strong nexus buckle
- Zipper closing
- According ISO 12402-4



Article number	Modell	Size	Weight
20.427.505	Talamex Inflatable lifejacket150N	Adult	40+ kg
20.427.020	Recharge set UML MK5 33g All Weather Automatic	Adult	40+ kg
20.400.001	Talamex 100N	Baby	0-15kg
20.400.015	Talamex 100N	Toddler	15-20kg
20.400.020	Talamex 100N	Child	20-30kg

Specifications

Boat type	Length x Width (cm)	Max. load capacity (kg)	Max. engine in kW/HP	Recommended kW/HP	Max. engine weight (kg)	Max. passengers	Number of air chambers	Diameter tubes (cm)	Weight incl. paddles (kg)	Transom height
85.908.380 S-Line 380	380 x 185	690	22,1/30	22,1/30	90	6	4	46	143	Long



The complete range of Talamex inflatable boats consists of the following models.
Ask your dealer for more information or visit www.talamexinflatables.com



© 2021-01 Lankhorst Taselaar. All rights reserved. Lankhorst Taselaar continuously explores means the products it designs, manufactures and distributes to improve. We strive to the utmost to produce up-to-date sales and service documentation. The technical specifications of engines, boats and accessories are ongoing subject to change. This brochure should not be regarded as a precise guide to find the latest technical information. Also, this brochure is not intended as a sales brochure for particular engine, boat or accessories. Distributors and dealers are no agents of Lankhorst Taselaar and has no authority to give explicit commitments on behalf of Lankhorst Taselaar, including but not limited to, statements with respect to a product, sales, applications or service. Not all products are available in all countries. Some products shown in this catalog are equipped with optional accessories. Please consult your dealer. Model, color, image, specifications changes reserved.



Talamex Marine Products distributed by Lankhorst Taselaar
Komeet 13 | 8448 CG Heerenveen | The Netherlands
T +31 (0)320 27 46 11 | E sales@lankhorst-taselaar.nl
I www.talamexinflatables.com

